

State of Wyoming Corner Record

(In compliance with the **CORNER PERPETUATION AND FILING ACT**, Wyoming Statutes, 1997 Section 33-29-140 et. seq., and the Rules and Regulations of the Board of Professional Engineers and Professional Land Surveyors)

Reverse side of this form may be used if more space is needed.

Record of original survey and citation of source of historical information (if corner is lost or obliterated). Description of corner monumentation evidence found and/or monument and accessories established to perpetuate the location of this corner. Sketch of relative location of monument, accessories, and reference points with course and distance to adjacent corner(s) (if determined in this survey). Method and rationale for reestablishment of lost or obliterated corner.

LOCATION: South corner common to Section 10 and Section 15, T14N, R65W, 6th P.M., Laramie County, Wyoming

HISTORICAL DATA:

- Survey of the subdivision lines in Township 14 North, Range 65 West, 6th P.M. in Wyoming Territory, Executed by Henry G. Hay, under his joint contract with John B. Thomas of the 16th day of July 1870; commenced 13th Aug 1870, completed 20th Aug 1870; critically examined, the necessary corrections and explanations made, the field notes, and the surveys they describe were approved by Silas Reed, Surveyor General on November 28th, 1870.

Set granite boulder 16X10X5 for 1/4 sec. cor.; land rolling prairie, soil sandy, vegetation buffalo grass

- See Record of Survey for David Berry performed by Steil Surveying Services, LLC (1102 West 19th Street, P.O. Box 2073, Cheyenne, Wyoming 82003) file No. 96114, dated August, 1996.

EVIDENCE FOUND: #5 rebar in the travel surface of Four Mile Road, 6" below grade in line with a fence to the North

MONUMENT & ACCESSORIES ESTABLISHED: none

LAT / LONG: 41°11'17.925"N, 104°38'44.887"W

Monument location

Monument Inscription

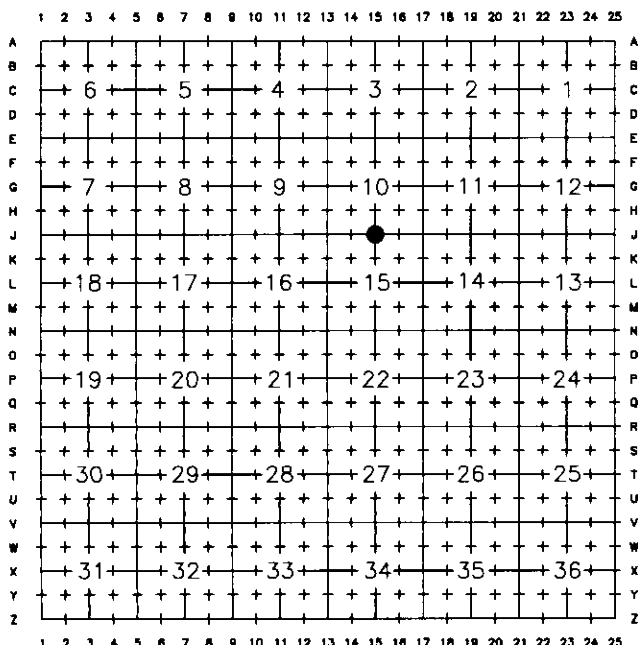
SEE BACK

NO CAP

Survey is based on a single static session, post processed by OPUS and a single RTK side shot to the monument. NAD83/93

Date of Field Work: DECEMBER 2006 Office Reference: 1263.00

Cross Index Plat



This corner record was prepared by me or under my direction and supervision.

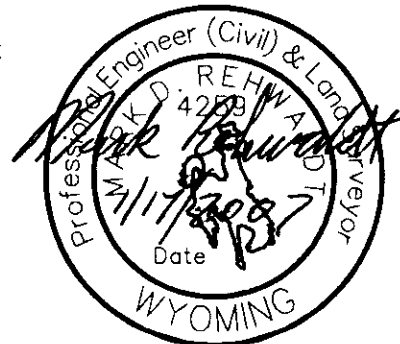
SEAL & SIGNATURE

COFFEY ENGINEERING & SURVEYING, L.L.C.

903 East Grand Avenue
Laramie, Wyoming 82070
(307) 742-7425



Mark D. Rehwaldt, PE/LS #4259

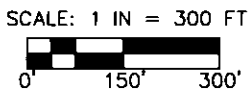
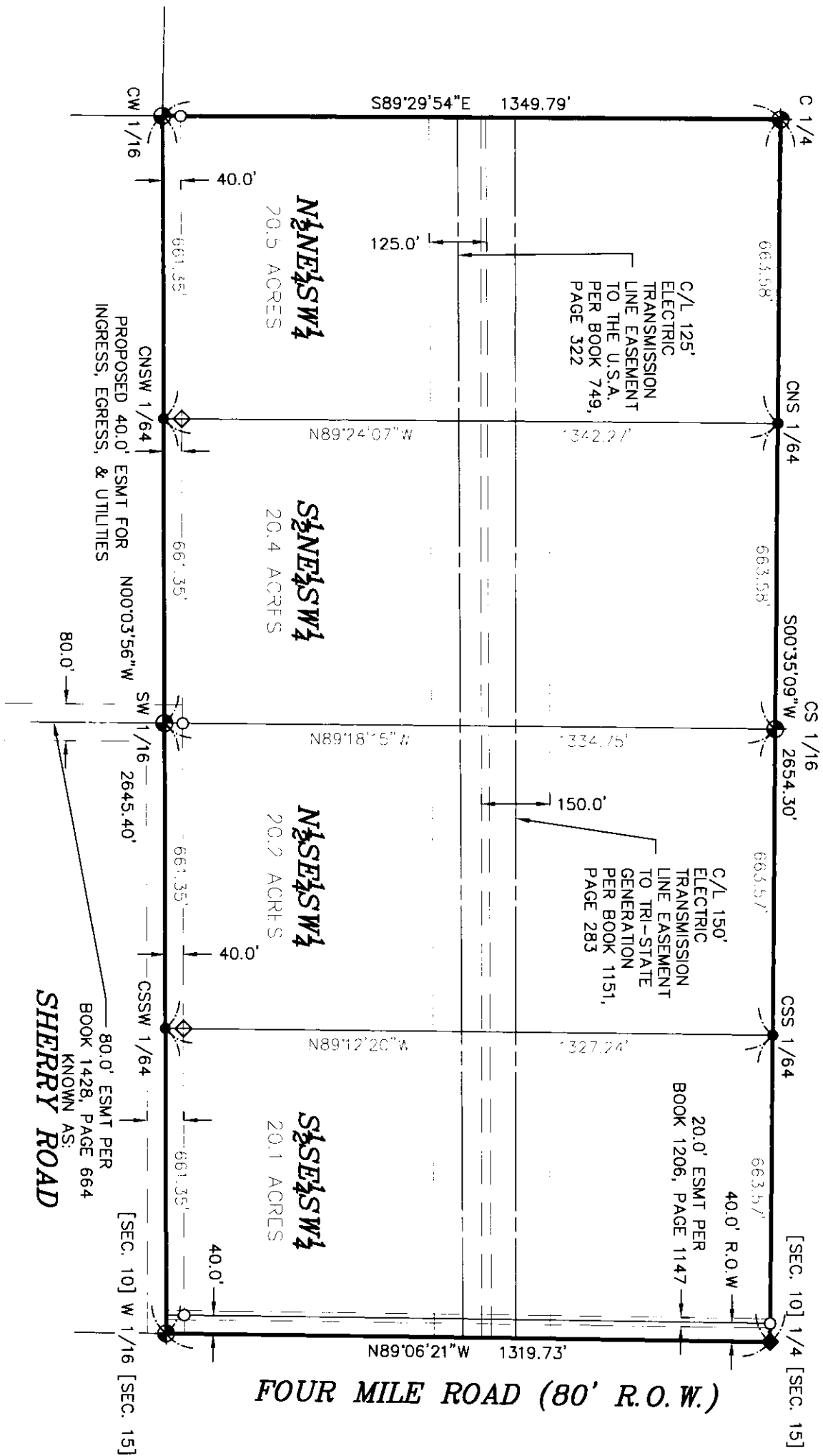


RECORDED 1/19/2007 AT 1:59 PM REC# 466072 BK# 1988 PG# 1545
DEBRA K. LATHROP, CLERK OF LARAMIE COUNTY, WY PAGE 1 OF 2

Corner Name South 1/4 Corner Section 10, T 14 N, R 65 W, 6th P.M.
County: LARAMIE Wyoming

Cross-Index No.: J-15

SBRPEPLS/PLSW: March 1994; PLSW January 1998



- ⊕ - FOUND 2.5" ALUMINUM CAP STAMPED "STEIL SURVEYING SERVICES PLS 2500"
- - FOUND 1.5" ALUMINUM CAP STAMPED "SSS PLS 2500"
- ◆ - FOUND 5/8" REBAR
- - SET 3.25" ALUMINUM CAP STAMPED PE/LS 4259
- ◇ - SET 1.5" ALUMINUM CAP STAMPED PE/LS 4259

